

**总部·圣奥科创园**  
中国·浙江省杭州市萧山区知行路1666号

**萧山现代化生产基地**  
中国·浙江省杭州市萧山经济技术开发区宁东路35号

**海宁生态制造基地**  
中国·浙江省海宁市尖山新区安仁路6号

**钱塘智造基地**  
中国·浙江省杭州市钱塘区青西三路5806号

**圣奥办公(雄衡)产业园**  
中国·河北省深州市经济开发区恒信新路北侧

**圣奥国际(北美)基地**  
墨西哥·新莱昂州蒙特雷市华富山工业园区

**Headquarters & Experience Center - Sunon  
Technological Innovation Park**  
No. 1666 Zhixing Road, Xiaoshan District,  
Hangzhou, Zhejiang, China  
TEL: +86 571 88166666    PC: 311200

**European R&D Center**  
Brunnenstrasse 156, 10115 Berlin, Germany

**Singapore Branch & Experience Center**  
#01- 01/02 At 18 Robinson, Singapore

**USA Headquarters & Experience Center**  
525 Technology Drive Suite 150 Irvine CA.92618, USA

**India Branch & Experience Center**  
Floor I & II, 643, Rd Number 36, Aditya Enclave, Venkatagiri,  
Jubilee Hills, Hyderabad, Telangana 500033, India

**Sunon Xiaoshan Manufacturing Base**  
No. 35 Ningdong Road, Xiaoshan Eco&Tech Zone (XETDZ),  
Hangzhou, Zhejiang, China  
TEL: +86 571 82833568    PC: 311200

**Sunon Haining Manufacturing Base**  
No. 6 Anren Road, Jianshan New District,  
Haining, Zhejiang, China  
TEL: +86 573 87800900    PC: 314415

**Sunon Qiantang Manufacturing Base**  
No. 5806 Qingxi Third Road, Qiantang District,  
Hangzhou, Zhejiang, China  
TEL: +86 571 56115058    PC: 310000

**Sunon Northern Industrial Park**  
North of Hengxin New Road, Economic Development Zone,  
Shenzhou, Hebei, China  
PC: 053899

**Sunon Mexico Base**  
Palomas 600 Parque Ind Hofusan Salinas Victoria NL.C.P.  
65500, Mexico



Sunon



BATMANN / 巴特纳



**CLAUDIO BELLINI DESIGN**

灵感来自设计师发现黑夜里的几束光影，如黑夜小精灵，将虚无成像，化作生活美学。

“设计的过程是一个不断寻找、发现、创造美的过程，这是设计师与生俱来的使命。”

——巴特纳产品设计师  
CLAUDIO BELLINI DESIGN 工 作 室

Inspired by those beams of light shining in the darkness, Batmann is an elf of night, visualizing your imagination by turning it into a lifestyle.

“The process of design includes seeking, discovering, and creating beauty, which is an innate mission for designers.”

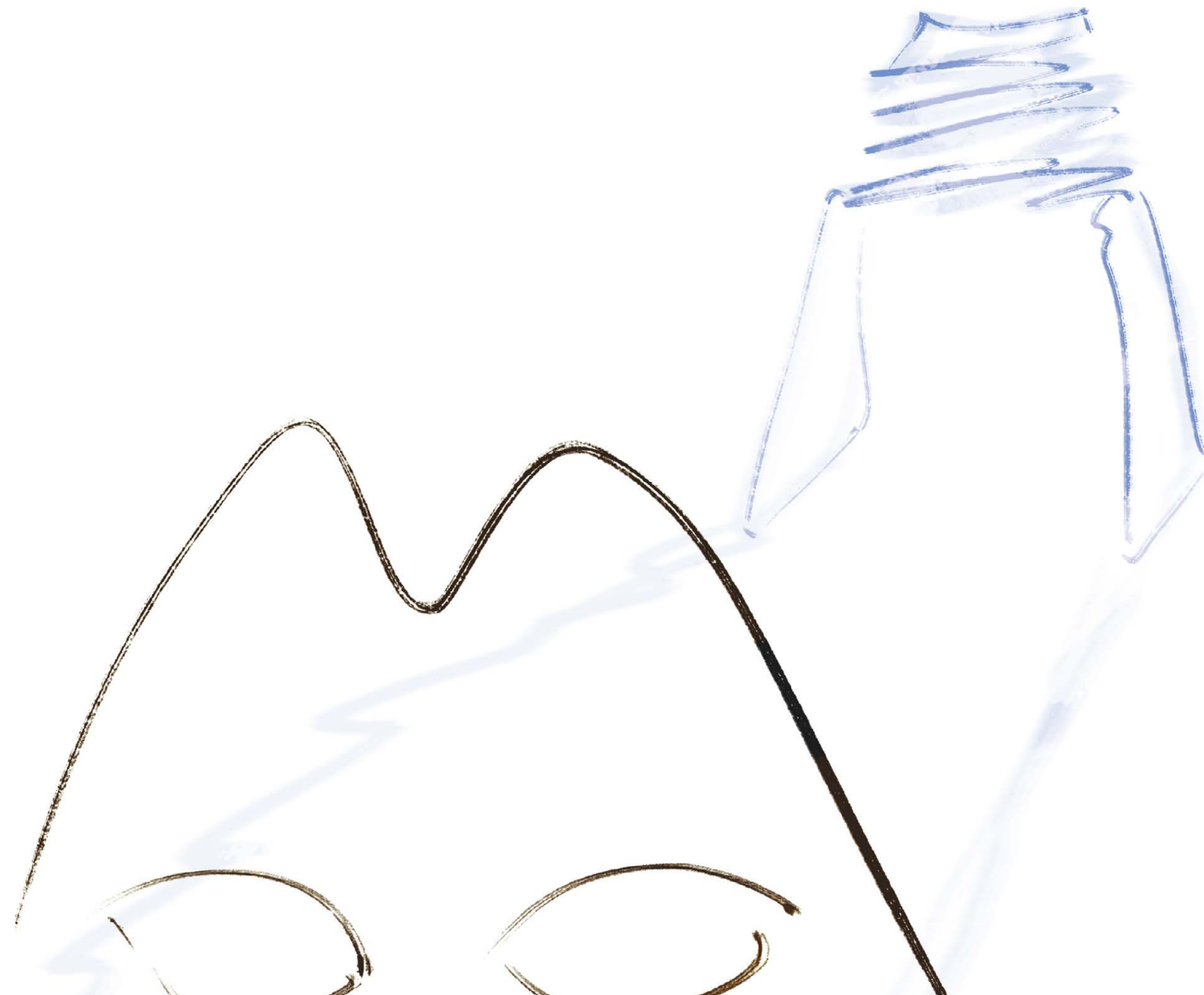
——Designer of Batmann  
CLAUDIO BELLINI DESIGN

## 关于灵感

一棵草的盛衰，发现了春的肖像；  
一个苹果缺口，发现了 Apple；  
10 亿非洲蝗虫密度疾飞，  
发现了汽车防撞系统；  
黑夜里的几道光，会发现什么？

## About Inspiration

From the growth of grasses,  
we feel the charm of spring;  
From the bitten apple,  
we witness the story of Apple;  
From the secret of locus swarm,  
we developed the collision avoidance system;  
What would we get from those beams of light  
shining in the darkness?



### 坐出灵感, 发现美

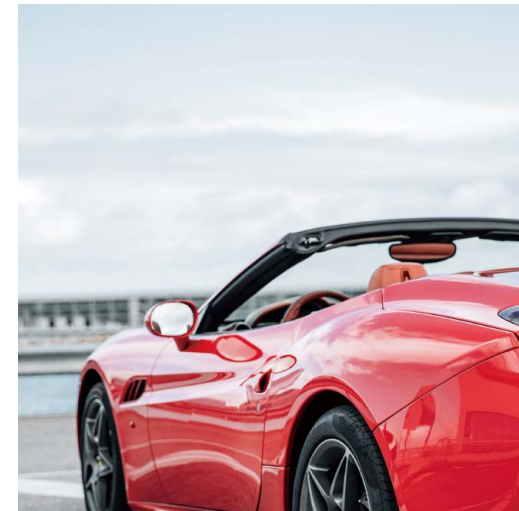
身体舒适时, 才会看到不一样的世界;  
眼里有颜色, 才会被激发时尚因子;  
或者, 一道光, 感受突然的爱意;  
或是, 一束影子, 联想世间万物。  
坐上去, 个性表达, 灵感迸发。

### Born from beauty, sparking inspiration.

When you are comfortably seated, you may see the world differently;  
from colors reflected in your eyes, you can feel the burst of inspiration.  
Be it a beam of light, enlightening you with the touch of love;  
or a layer of shadow, connecting you with the world.  
Just sit here, feel it, and get inspired.



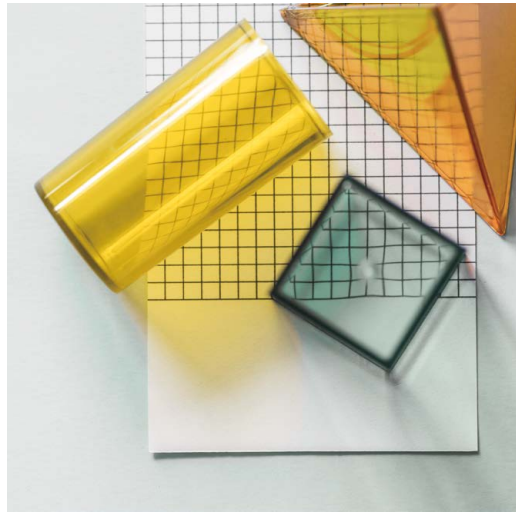




能透光的椅子 激发奇思妙想，  
影与色的交叠让思维开阔。  
采用久坐不变形的高光 PC 材质，  
16.5mm 厚度，挡不住光的穿透，  
更因高透光度应用于汽车装置，  
上色均匀透亮，赋予空间魔幻妙想。

Light transparent chair, mind inspiring.  
An artwork of light and colors, broadening your  
thoughts. Reflective PC material for the chair  
base is 16.5mm-thick, indeformable and durable,  
and is also widely used in automobile production.  
Coloring is uniform and bright, endowing the space  
with imaginary charm.





### 时尚色彩 潮流先锋

记得给办公生活加点彩，  
红、黑、黄、白、珊瑚色，  
原料调色制成，内外兼修，  
螺丝锁扣同色搭配，  
细节处，掌控办公时尚潮流。

### Trendy Colors for Trendsetters

Always remember to add some bright colors  
to your office life.

Red, black, yellow, white, coral,  
these colors of natural elements, make the  
chair beautiful inside and out.  
Even the screws are of the same color of the  
chair body,  
you just know it will set a new trend from the  
tiniest detail.







### 两种脚型 自由选择

195 钢管脚，金属至简主义。  
四点一面四叉脚，演绎干练，  
两线一面弓形脚，诠释沉稳。  
100kg 承重测验，安全放心。

### 2 Leg Types Available for Choice

195 steel leg, an expression of minimalism with metal.  
With four points in one plane, this four-forked base  
draws a picture of conciseness,  
With two lines in one plane, the cantilever base is a  
symbol of steadiness.  
With both passing the 100kg-load-bearing test, your  
safety is guaranteed.



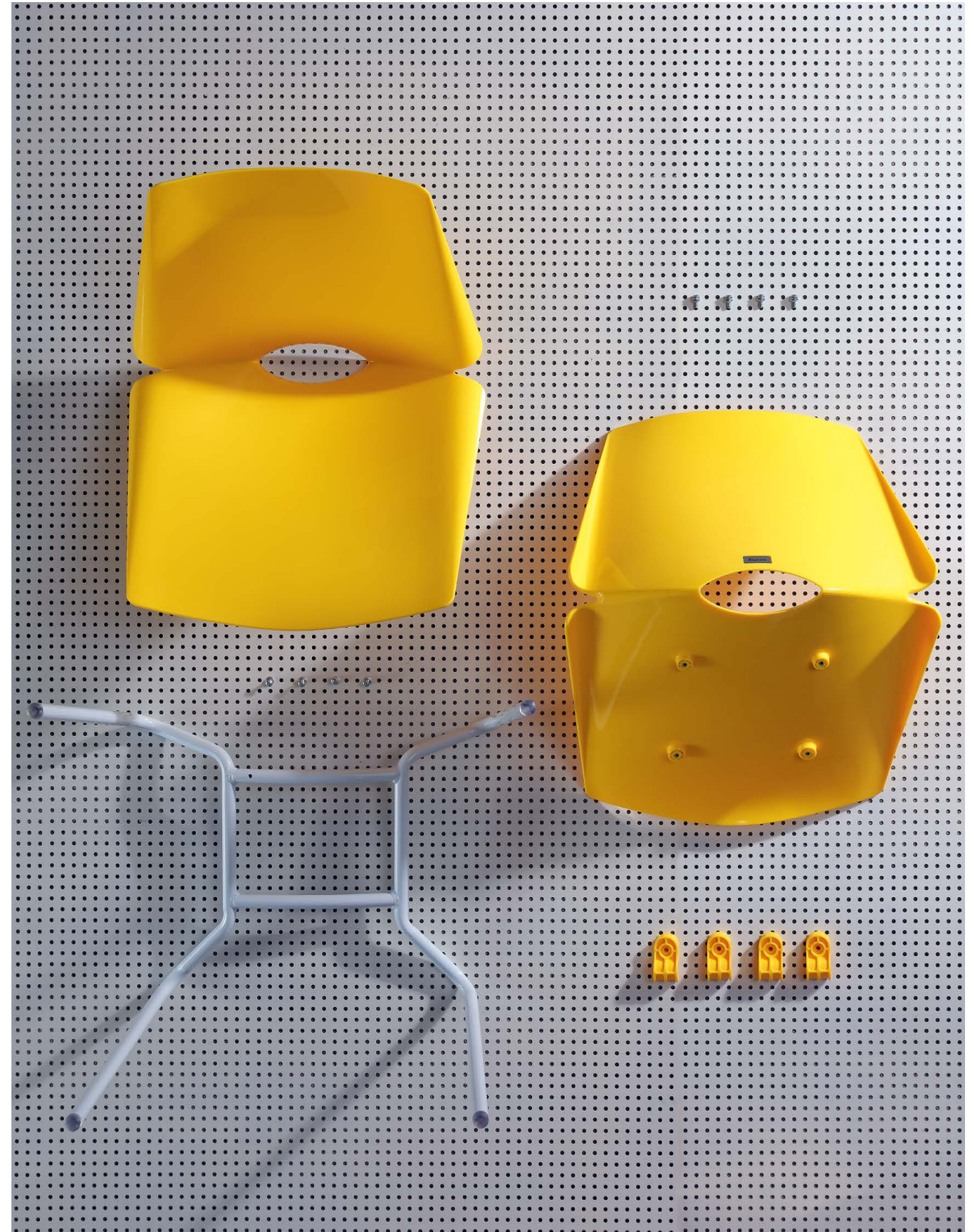


### 拆装, 就这么简单

一体成型曲面背框, 光彩灼灼;  
Loft 风钢管下脚, 简洁而轻盈;  
四眼卡扣连接, 3 分钟搞定安装!

### (Dis)assembling, Easy Peasy!

Smoothly shaped cambered back frame, shining with a flow of light;  
Loft-style steel feet, concise and light;  
Four-screw fastening, taking only three minutes to put together!





### 开口设计 提拿便捷

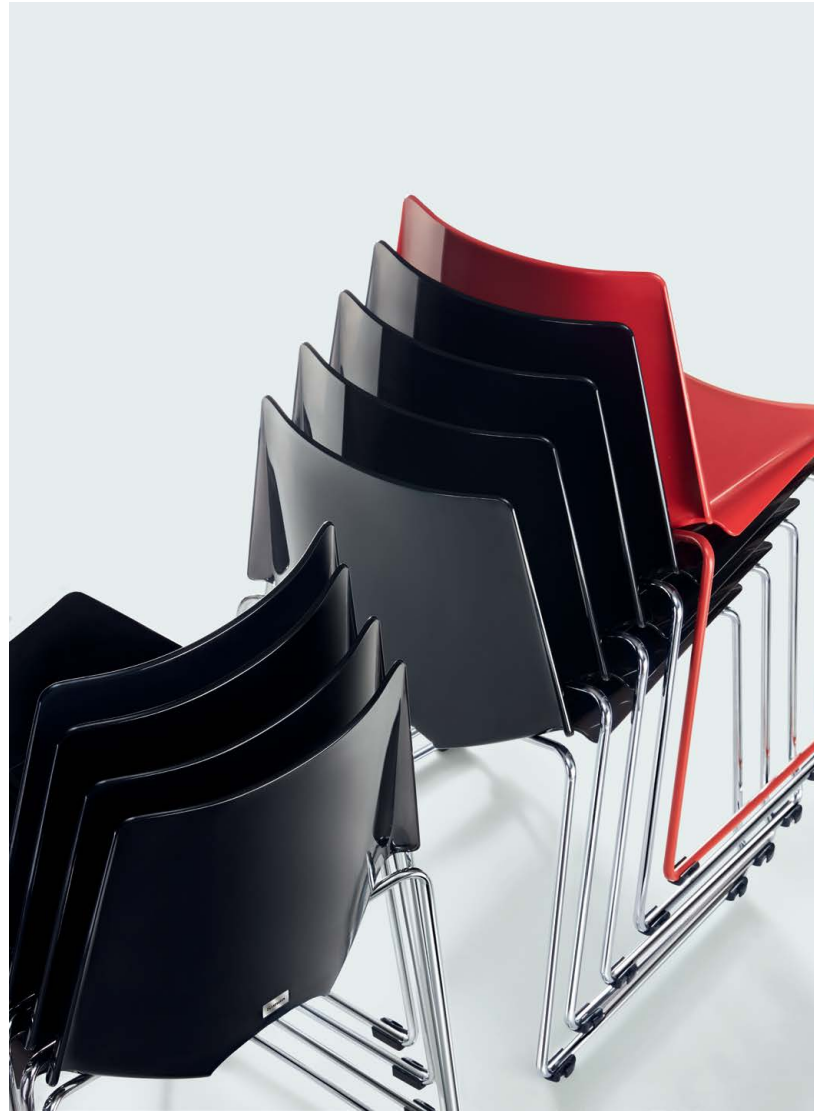
坐深半弧开口设计，  
如泉眼，提升灵动感，  
是提拿抓手，也可透气。  
单手较量，空间随意切换。

### Open a Window, Get a Handle

The arch-shaped hole in the back  
is the month of the spring of dynamism.  
It's a handle as well as a ventilation opening.  
With that, you can manipulate the space with  
one bare hand.







### 堆垛艺术 节省空间

空间利用最大化，  
堆垛艺术正好。  
可达 10 把椅子堆垛，  
小推车搬运便捷。  
说不定，  
举手投足间增进友谊。

### Master of Stacking, Art of Storage

To make use of space to the maximum, stacking  
is the best way.  
Up to 10 Batmann can be stacked together and  
moved together easily with a trolley.  
Such interaction may be a good way to enhance  
your friendship.





周一早会，  
夺一把喜欢的大红椅子，  
眼睛里会放光，  
脑海里灵感乍现。  
今天的发言，胸有成竹。

Here comes the morning meeting on  
Monday.  
Hurry, just grab the red chair you like.  
Enough to make your eyes sparkle.  
With ideas popping up in your head,  
you surely have the presentation  
today well in hand.







高手过招，思想的光芒，  
激发你强烈的求知欲，  
别犹豫，拎把椅子，  
迅速加入。

This is a game for master-hands.  
The flame of thoughts is burning brightly,  
intriguing your thirst for new ideas.  
Hesitate no more, get your chair, join them!



产品参数 Specification



CBN10GS  
W590\*D535\*H775(mm)



CBN11GS  
W585\*D515\*H775(mm)



CBN12GS  
W590\*D535\*H775(mm)



CBN13GS  
W585\*D515\*H775(mm)



CBN15GS  
W585\*D515\*H775(mm)

材质 Material

CBN10GS / CBN11GS

背框颜色 Colors of Back Frame



黑色  
Black



灰白色  
Greyish White



柠檬黄  
Lemon Yellow



珊瑚色  
Coral



红色  
Red

椅架颜色 Colors of Understructure



雅墨黑  
Ink Black



珊瑚色  
Coral



玛莎拉红  
Marsala Red



暖白色  
Warm White

CBN12GS / CBN13GS

背框颜色 Colors of Back Frame



黑色  
Black



灰白色  
Greyish White



柠檬黄  
Lemon Yellow



珊瑚色  
Coral



红色  
Red

椅架颜色 Colors of Understructure



电镀脚  
Electroplated Base

CBN15GS

背框颜色 Colors of Back Frame



黑色  
Black

+



曜石黑  
TP-ZP10H

椅架颜色 Colors of Understructure



雅墨黑  
Ink Black

鉴于产品不断更新, 日后产品规格等若有变动, 以实物为准, 不再另行通知。  
Given that products may be updated constantly, no further notice will be given in regard of changes in specification, and the real product shall be considered as final.